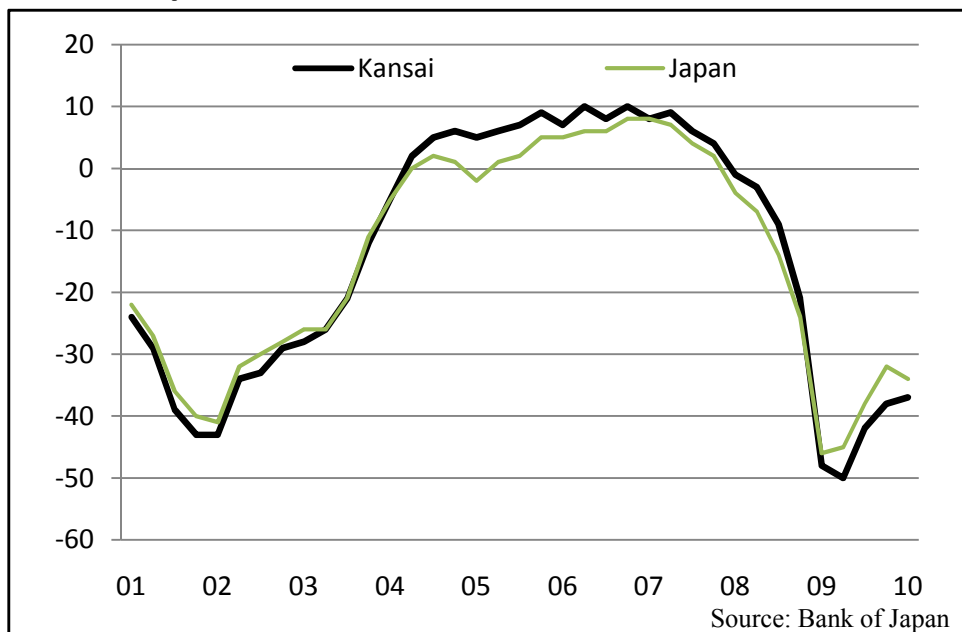


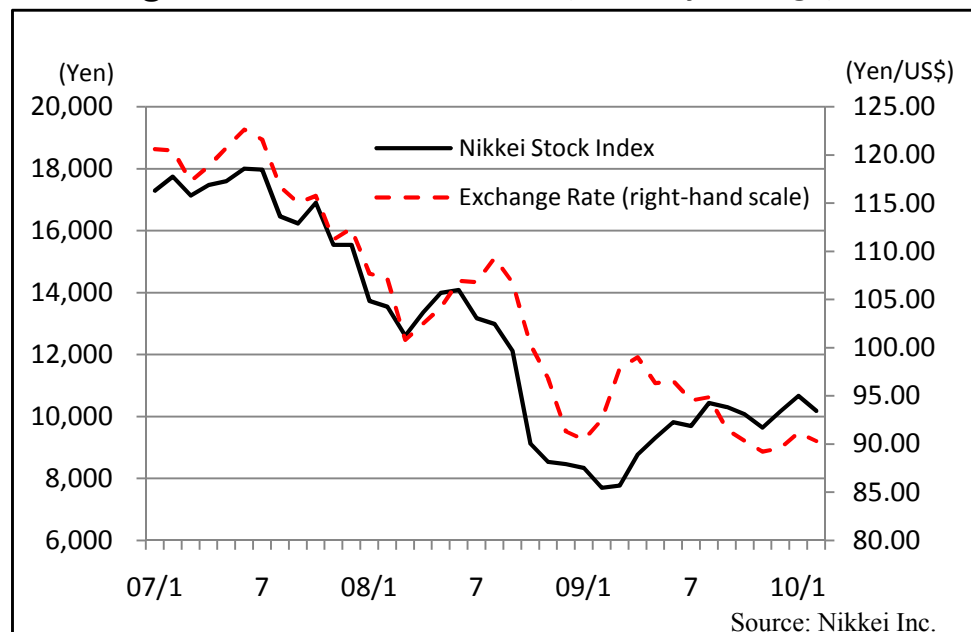
# Economic Indicators Report

Kansai Economic Federation (Kankeiren)

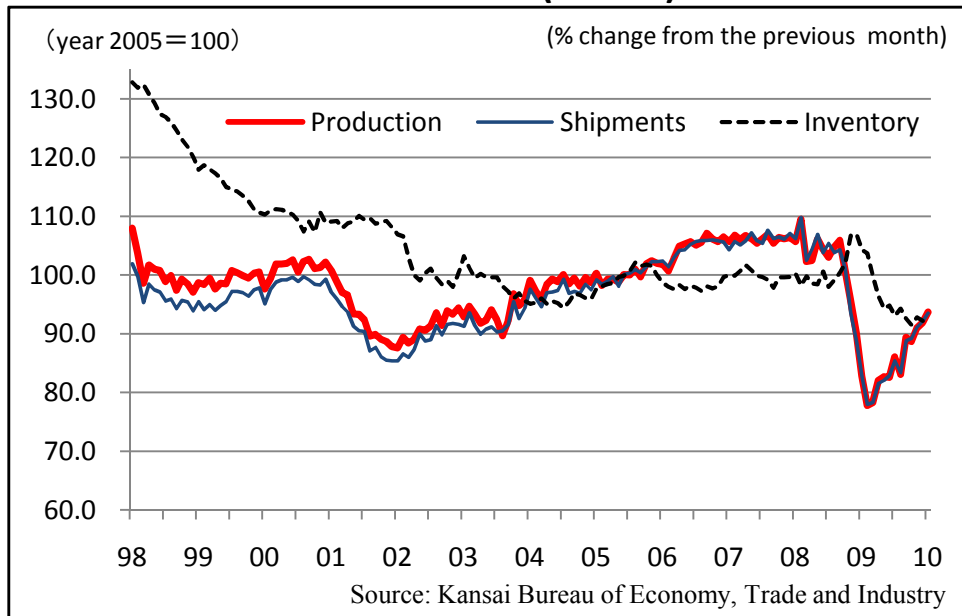
**Bank of Japan TANKAN (Diffusion index, all industries)**



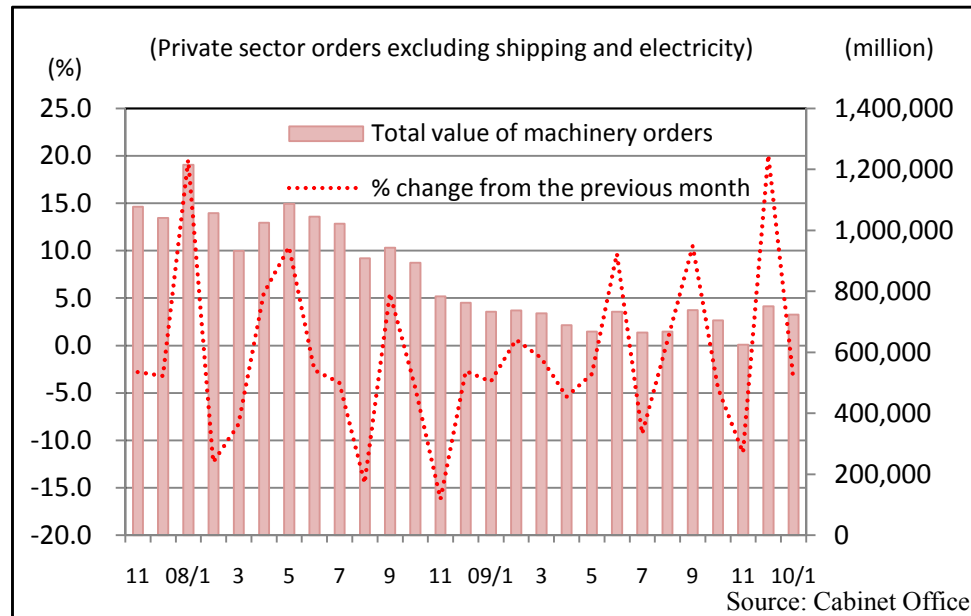
**Exchange Rate and Stock Prices (Monthly Average)**



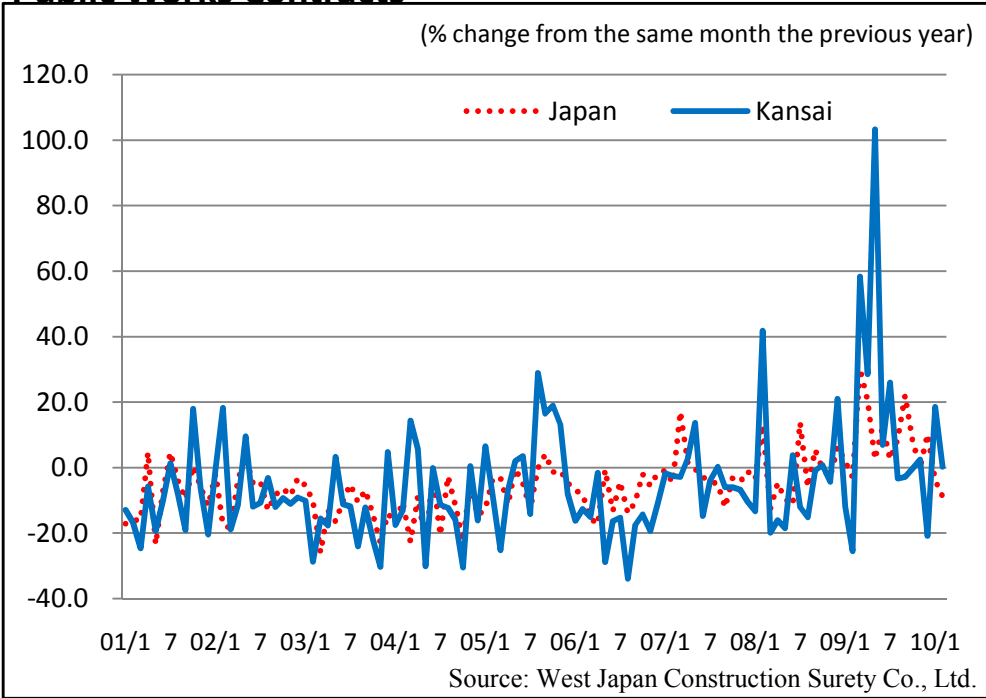
**Indices of Industrial Production (Kansai)**



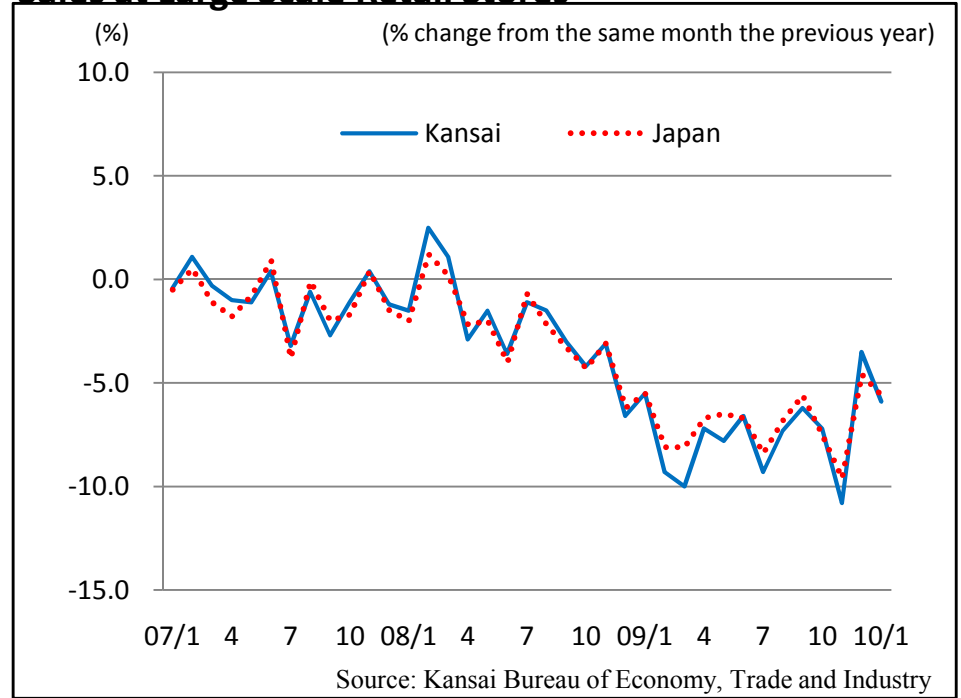
**Orders Received for Machinery (Japan)**



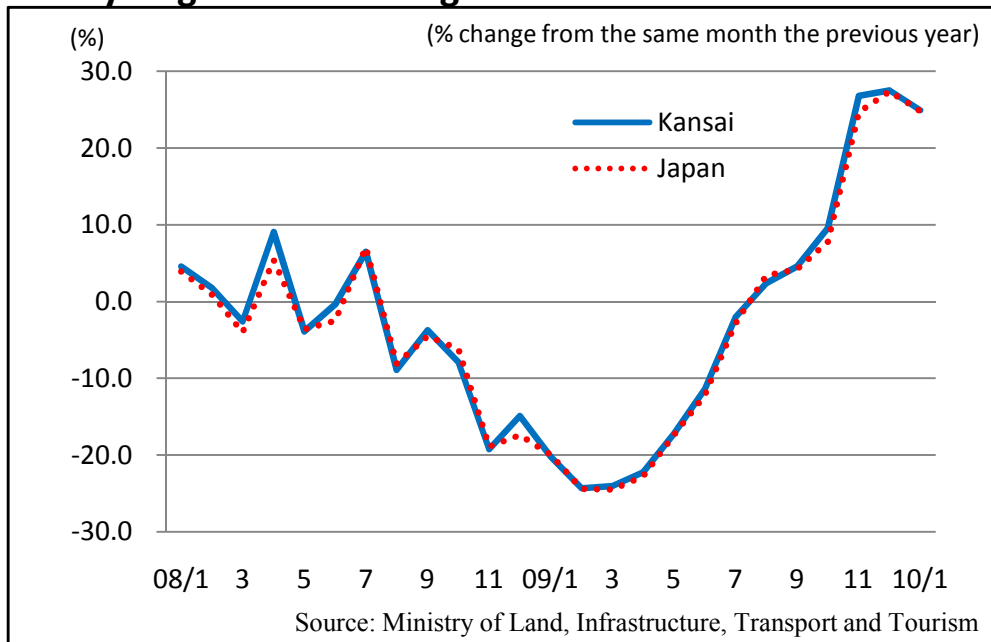
## Public Works Contracts



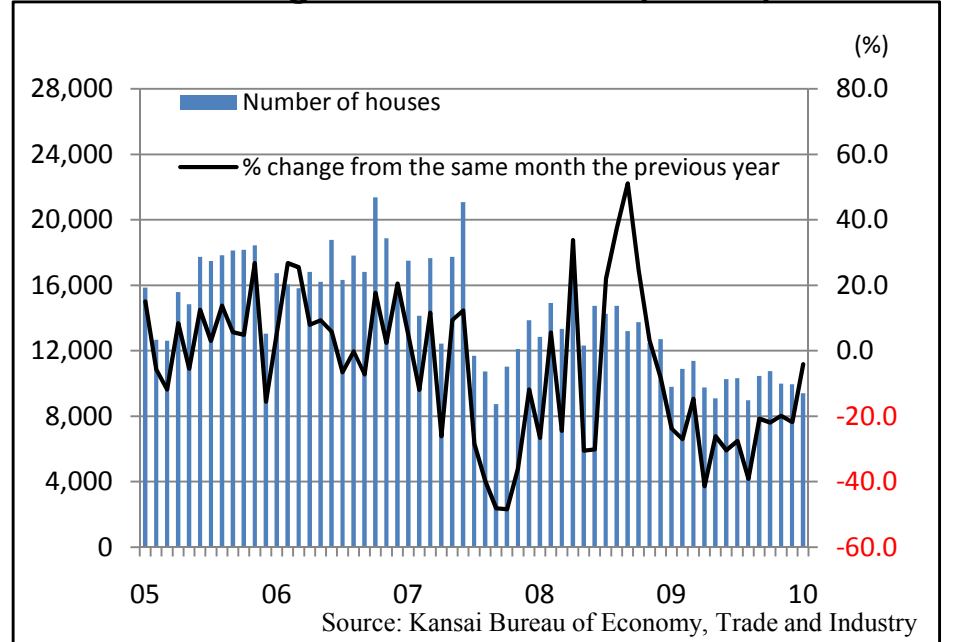
## Sales at Large Scale Retail Stores



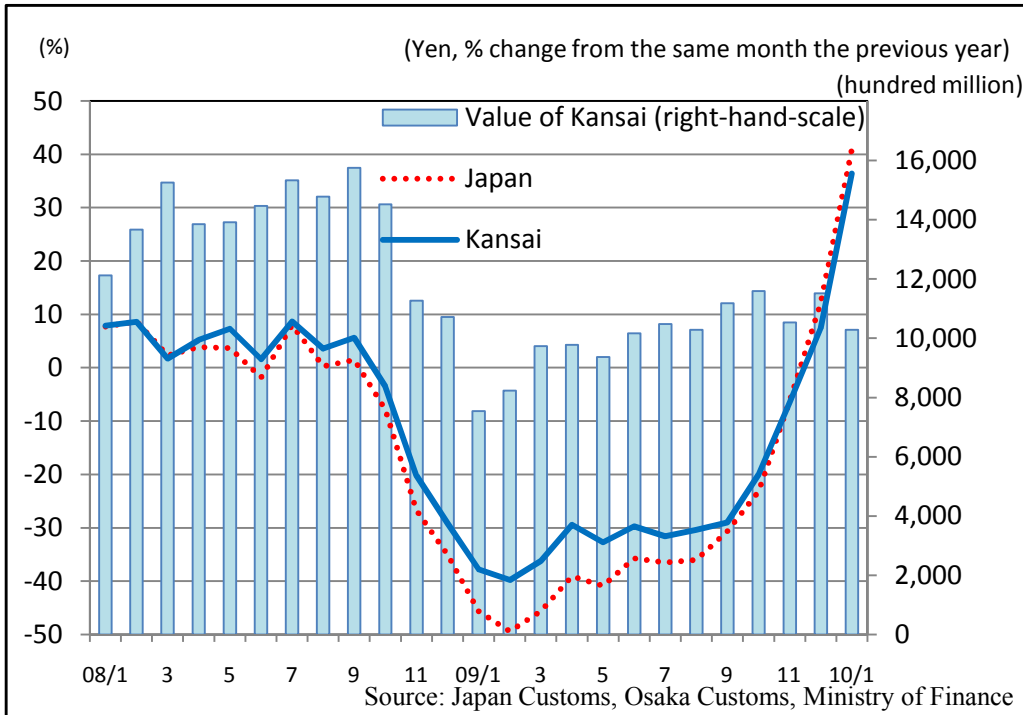
## Newly-Registered Passenger Cars



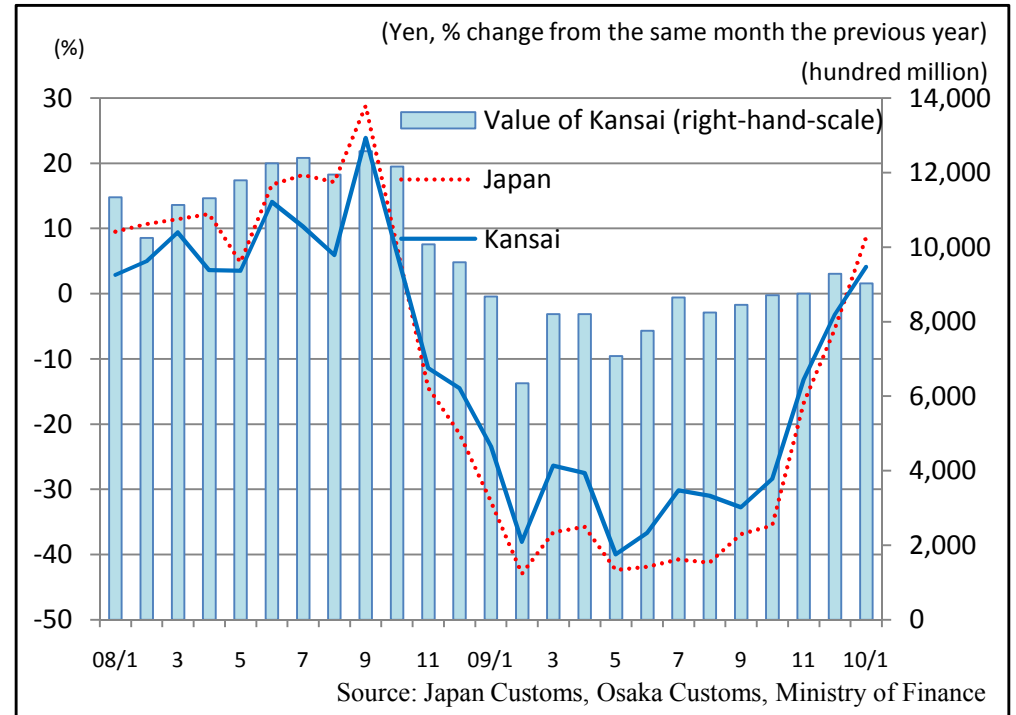
## Construction Begun on New Houses (Kansai)



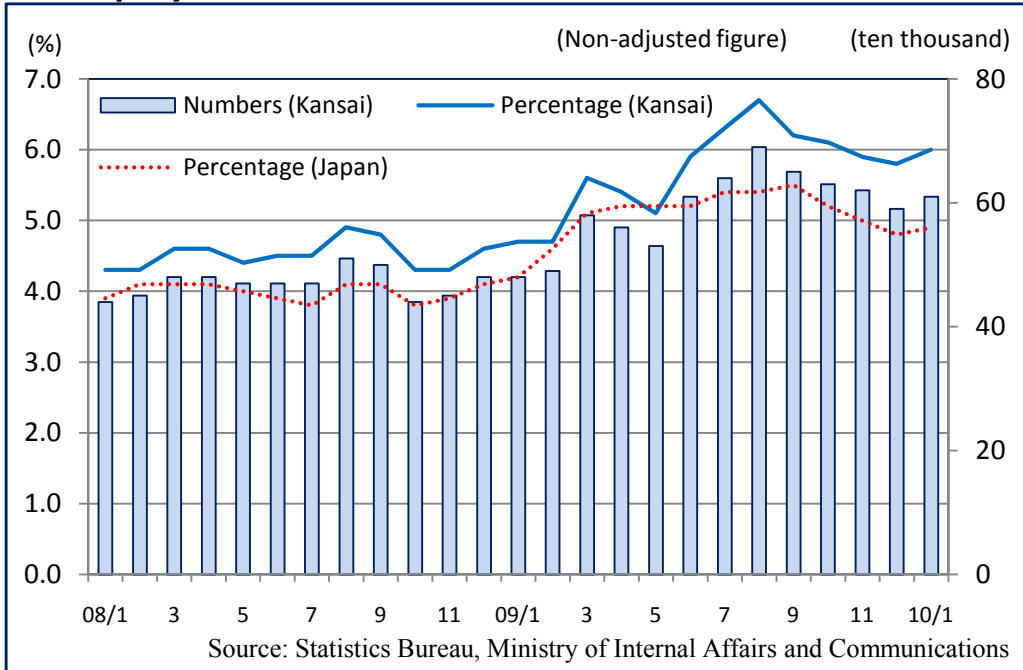
## Exports



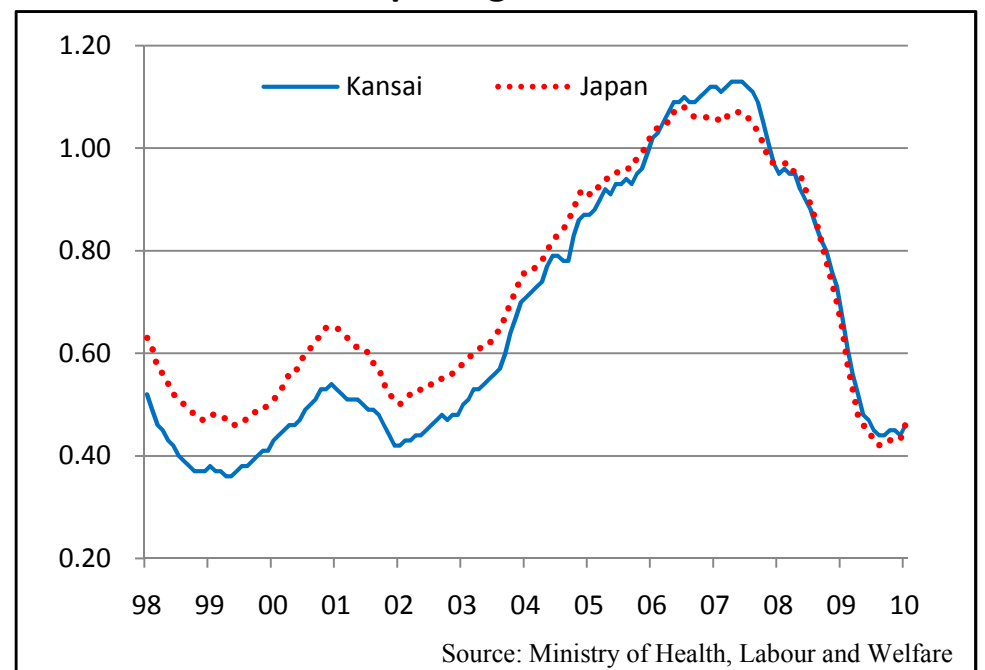
## Imports



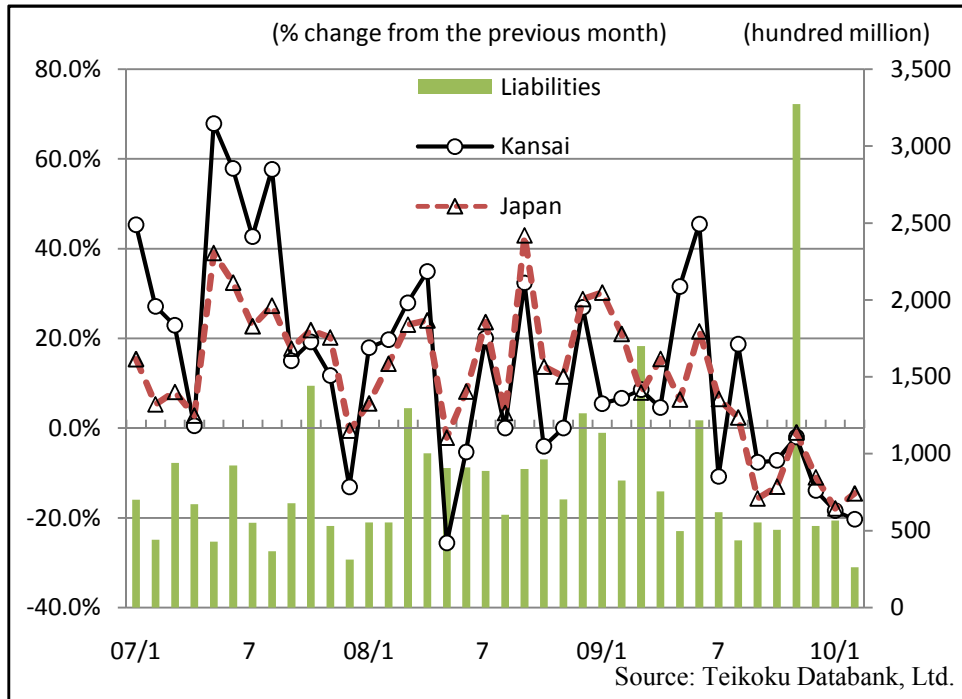
## Unemployment Rate



## Ratio of Active Job Openings



## Number of Bankruptcies



## Consumer Price Index

