

Circulation of local resources ranging from rapeseed cultivation to BDF refining

Rape Blossom Eco-Project

Features

- Contributes to global warming prevention by locally collecting and changing waste cooking oil into bio-diesel fuel (BDF).
- Arrangements ranging from rapeseed cultivation to fuel refining for the local production and local consumption of energy.
- Spreading as a local model of resource circulation to every part of Japan.

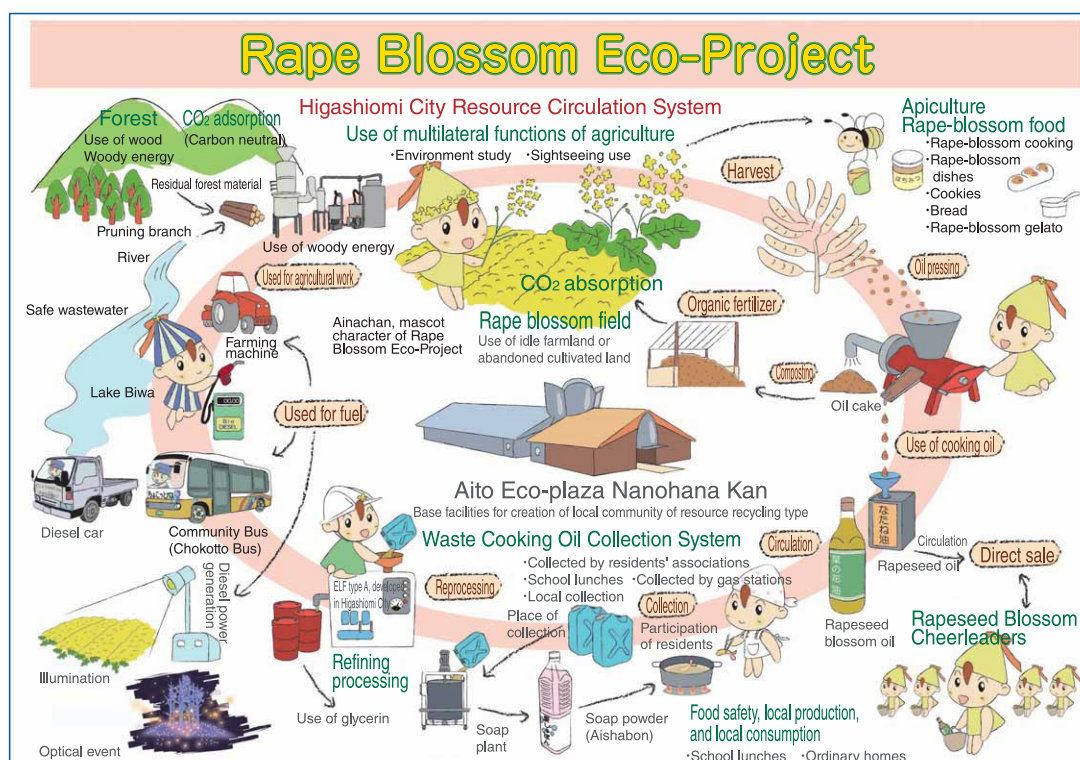


file
152

Overview

(Technical principles, actions, etc.)

A soap promotion campaign to maintain the water quality of Lake Biwa is the starting point of the Rape Blossom Eco-Project. Activities to collect and convert waste cooking oil into soap that does not contaminate Lake Biwa developed into the conversion of waste cooking oil into BDF and the cultivation of rapeseeds. The Rape Blossom Eco-Project promotes the cultivation of rapeseeds in idle farmland or abandoned cultivated land to obtain cooking oil, the use of the cooking oil for home cooking and school lunches, and refine the waste cooking oil to make BDF as an alternative fuel for light oil used for cars, farming machines, and power generation. It is a measure through which all the resources circulate locally.



Circulation of Rapeseed Blossom

Introductory Track Record

- A BDF refinery plant was constructed in 1996. Rapeseed planting started in 1998, when the Rape Blossom Eco-Project started. Presently the movement is spreading throughout Japan.
- Approximately 32,000 liters of waste cooking oil is recovered annually in Higashiomi, from which 23,000 liters of fuel is refined presently, which contributes to a CO₂ reduction of approximately 57 tons.

Effects

- The Rape Blossom Eco-Project is making a variety of ripple effects, such as the promotion of agriculture, sightseeing, education, community business, and other resident participation activities.

Higashiomi City, Shiga Prefecture

Aito Eco-plaza Nanohana Kan

70 Imoto-cho, Higashi-Omi City, Shiga Prefecture 527-0162

• TEL / +81-749-46-8100 • FAX / +81-749-46-8288 • E-Mail / nanohana@city.higashiomi.shiga.jp • <http://www.city.higashiomi.shiga.jp/nanohanakan/>