

Aiming at constructing a center of LED light (illumination) industries

# LED Valley Project

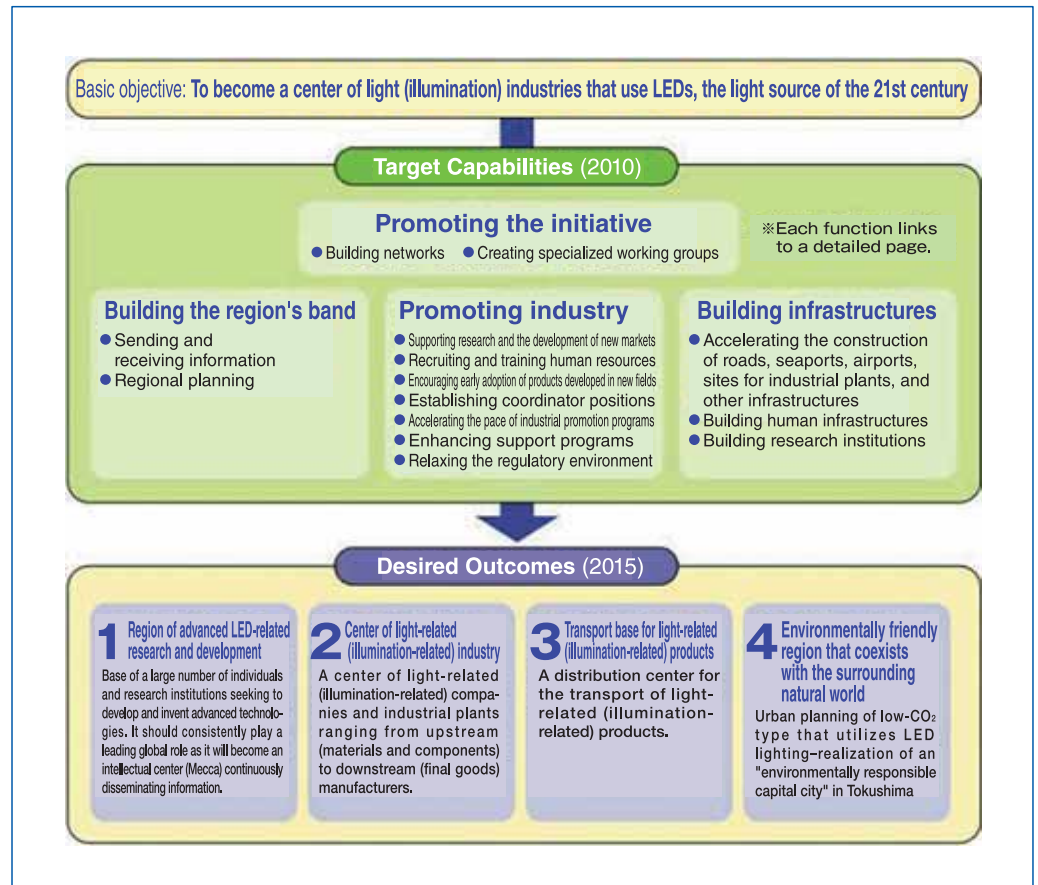
## Features

- ▮ Aiming at constructing an industrial structure where LED-applied product manufacturers will be located around the world-class largest LED manufacturers.
- ▮ Maintaining a variety of functions to produce a local LED brand of Tokushima disseminated worldwide.
- ▮ Making preparations for a variety of substantial programs under the cooperation of manufacturers, research institutes, and administrative organizations to promote the LED-related industry.

## Overview

(Technical principles, actions, etc.)

The LED Valley Project of Tokushima Prefecture was drawn up in December 2005. Since then, companies, universities, organizations concerned, and residents have been cooperating and making efforts toward the realization of the LED Valley area. The Project aims at gathering optics-related plants and research institutions for LEDs regarded as the light source of the 21st century, fostering high-tech engineers, and maintaining a base to make state-of-the-art research and development to make an optical industrial center in Tokushima.



LED Valley Initiative Organizational Chart

## Introductory Track Record and Effects

- ▮ **The Project started with 10 LED-related companies. The number of companies increased to 100 as of September 2010. The main support programs include aids to medium- and small-sized businesses that develop LED-related products in Tokushima Prefecture with the management gains (approximately 70 million yen a year) of LED Valley Promotion Funds, the opening of LED-related engineer training seminars at technical college, and participation to fairs.**

## Tokushima

Prefecture Industrial Promotion Division Commerce, Industry & Labour Department 1-1 Bandai-cho, Tokushima City, Tokushima, 770-8570

● TEL / +81-88-621-2198 ● FAX / +81-88-621-2853 ● E-Mail / led@mail.pref.tokushima.lg.jp ● http://led-valley.jp